



HC20SS



5.5" x 20" x 20" (H x W x D)

20 inch wide under cabinet convertible range hood for ducted or ductless use in stainless steel, made in North America

Highlights:

20 inch wide pairs well with a variety of ranges and cooktops

Made in North America in a TAA designated country

Stainless steel construction for a professional look

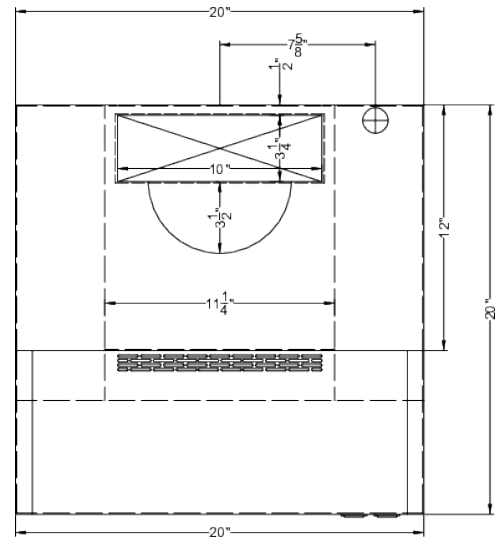
Product Features:

| | |
|-------------------------------------|--|
| Under cabinet range hood | Low profile design offers classic style to finish your kitchen |
| 20 inch width | Sized for use over 20 inch cooking surfaces (additional sizes available) |
| Convertible design | Can be used for ducted venting to the outside or recirculating ventilation where no external venting is possible |
| Stainless steel finish | Real stainless steel with a horizontal grain for a clean, professional look |
| Easy conversion | Ships pre-set for recirculating mode but can be converted in a few simple steps |
| Versatile top or rear exhaust | Can be connected to 3 1/4" x 10" vertical or horizontal exterior venting or 7" round vertical (transition required for both) |
| Powerful ventilation | Can operate at 270 CFM to ensure thorough ventilation of your cooking surface |
| Angled airflow | Vents are set at a slight upwards angle, ensuring smoke and odors won't be directed towards the user |
| Durable 21 gauge steel construction | Stainless steel exterior with a body that's 53% heavier gauge than most of the industry's under cabinet hoods |

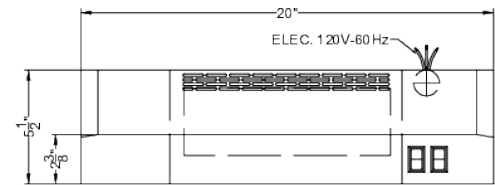


HC20SS Specifications:

| Overview | |
|----------------------------|--------------------------------------|
| Height of Cabinet | 5.5" (14 cm) |
| Width | 20.0" (51 cm) |
| Depth | 20.0" (51 cm) |
| Cabinet | Stainless Steel |
| US Electrical Safety | UL |
| Canadian Electrical Safety | ULC |
| Amps | 1.7 |
| Voltage/Frequency | 115 V AC/60 Hz |
| Weight | 11.0 lbs. (5 kg) |
| Parts & Labor Warranty | 1 Year |
| UPC | 761101087054 |
| Range Hood | |
| Installation | Under Cabinet |
| Venting | Convertible |
| Controls | Dial |
| Number of Fan Speeds | 2 |
| Maximum Air Movement | 270.0 CFM |
| Sone Rating | 6 |
| Duct Shape | 3"1/4" x 10" rectangular or 7" round |



TOP VIEW



FRONT VIEW